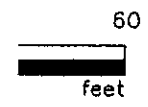


Bill R

ON OF A
BLOCK A
BLOCK A
OF
2
BLOCK D
OF

REA
R
ANT
S.C.
MAY 25, 1997



RING
C.

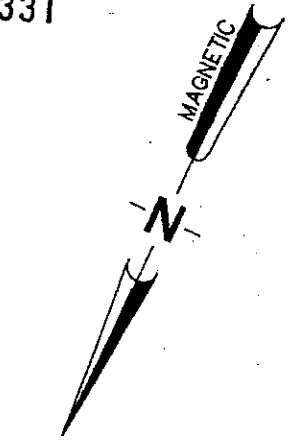
JOB No. 123-20

10 EXISTING UNITS
PARCEL 7 PHASE 1
TMS 530-00-00
PARCELS 108 - 117

TRACT "A"
TMS 530-00-00-003

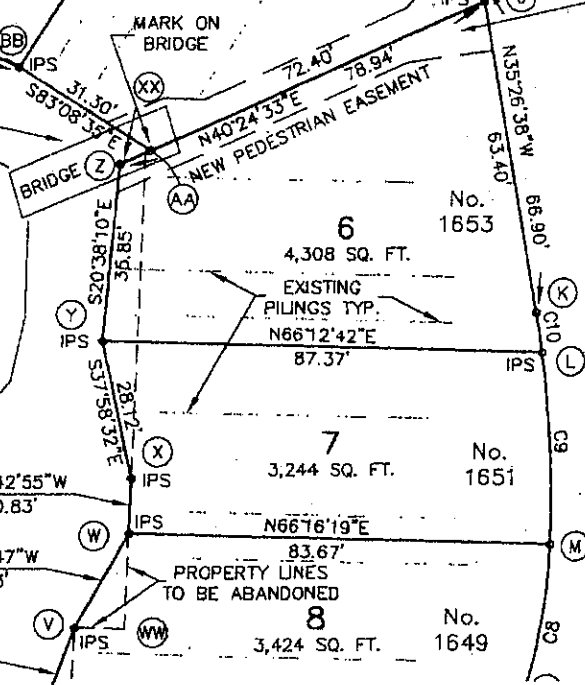
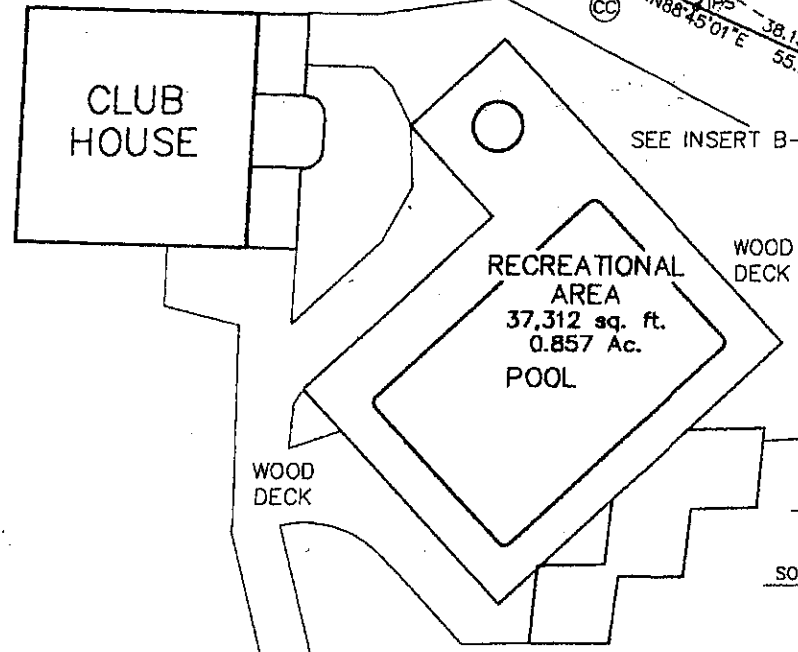
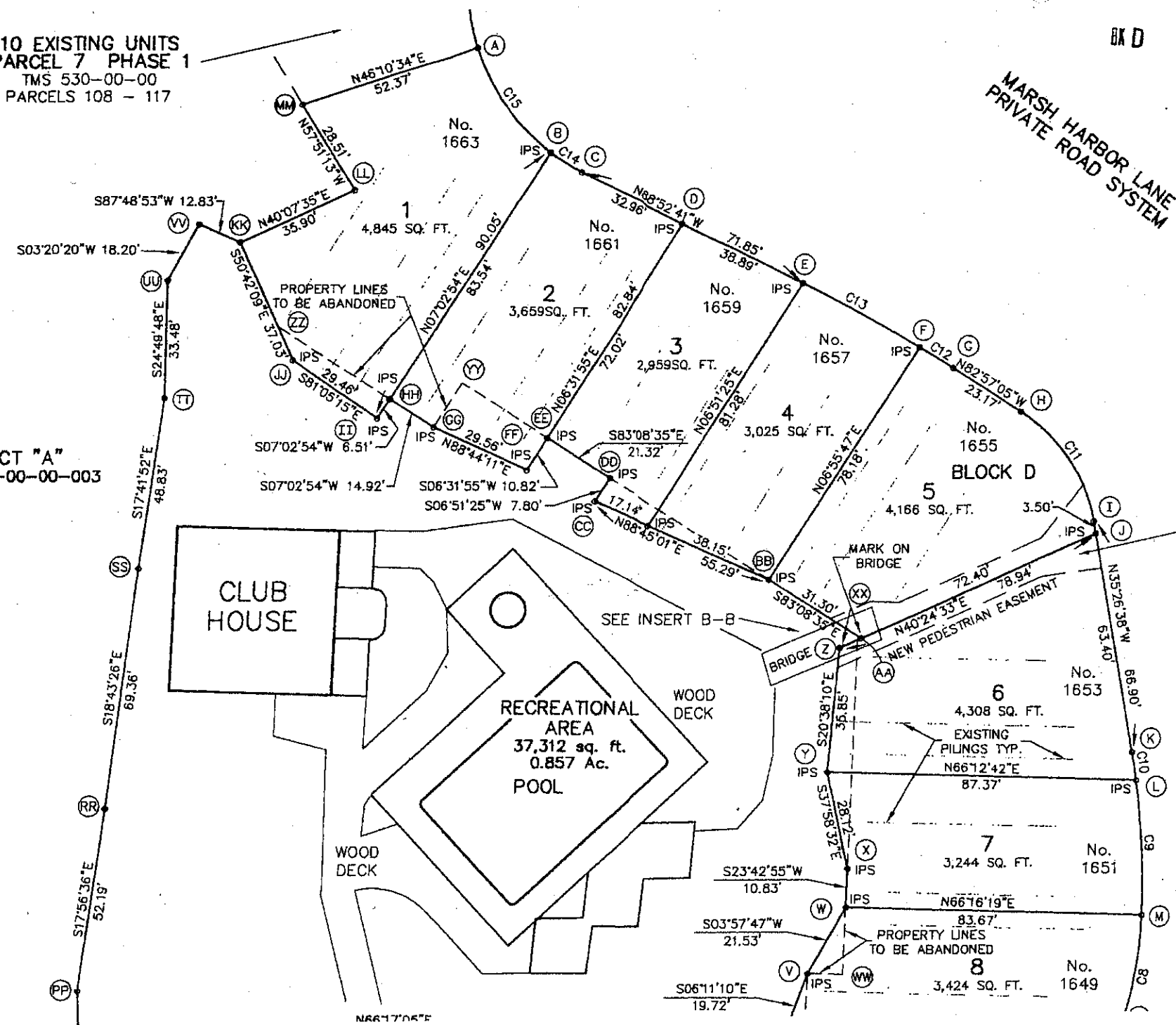
BK D 284 PG 331

MARSH HARBOR LANE
PRIVATE ROAD SYSTEM

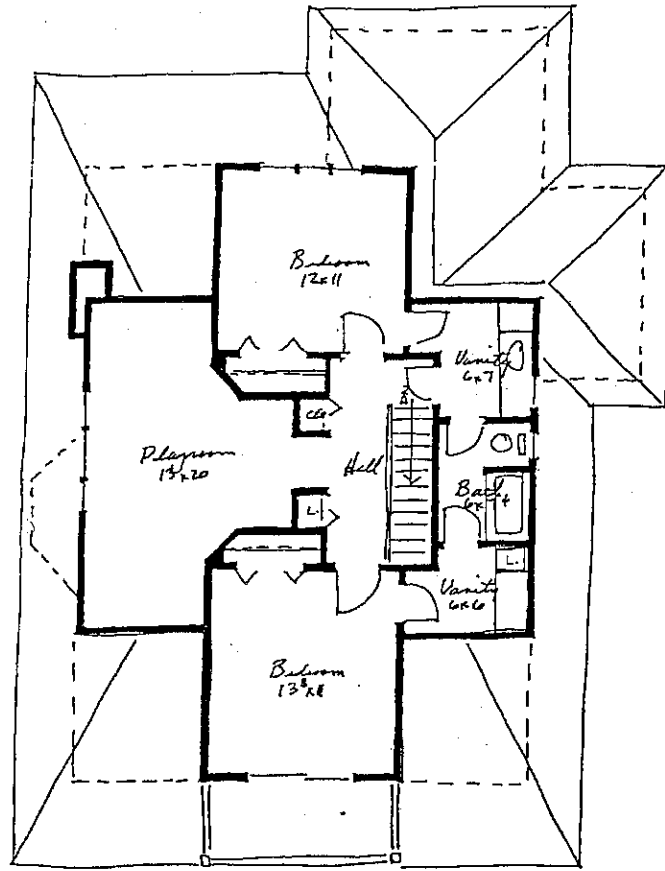


SEE INSERT A-A FOR
DIMENSION OF NEW
PEDESTRIAN ESMT.

MARSH HARBOR LANE
PRIVATE ROAD SYSTEM

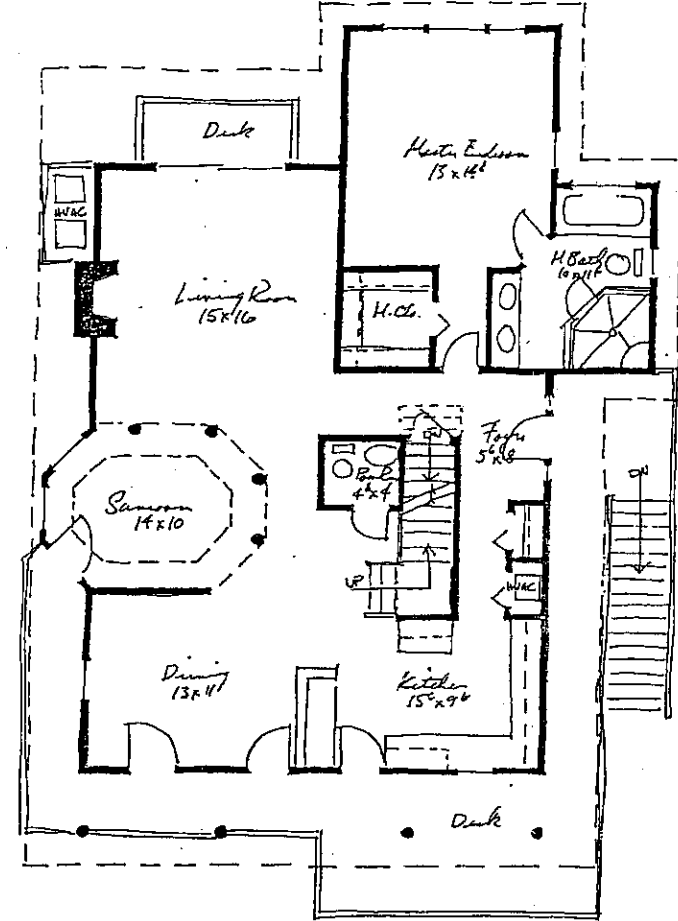


BD 284PG332



CONCEPTUAL
SECOND FLOOR PLAN
SCALE 1/4"=1'-0"

FIRST FLOOR 1340 S.F.
SECOND FLOOR 845 S.F.
TOTAL 2185 S.F.



CONCEPTUAL
FIRST FLOOR PLAN
SCALE 1/4"=1'-0"

REVISION	BY
3-13-17	SR

STEPHEN A. RUSSELL, AIA
745-C JOHNNIE DODDS BOULEVARD
MOUNT PLEASANT, S.C. 29464 (803)884-7810

LOTS 1-9, BLK. D
MARSH HARBOR
Mt. Pleasant, SC

DATE	SCALE
3-13-17	

Exhibit "D"

OKD 284 PG 333



CONCEPTUAL
FRONT ELEVATION
SCALE 1/4" = 1'-0"

W. Russell

REV	DATE	BY
3	13-97	SR

STEPHEN A. RUSSELL, AIA
 745-C JOHNNIE DODDS BOULEVARD
 MOUNT PLEASANT, S.C. 29464 (803)884-7810

LOTS 1 - 9, BLK. D
 MARSH HARBOR
 Mt. Pleasant, SC

2
2-13-97
10/4
2
2

Exhibit "D"